



OREx1 G2 | flameproof

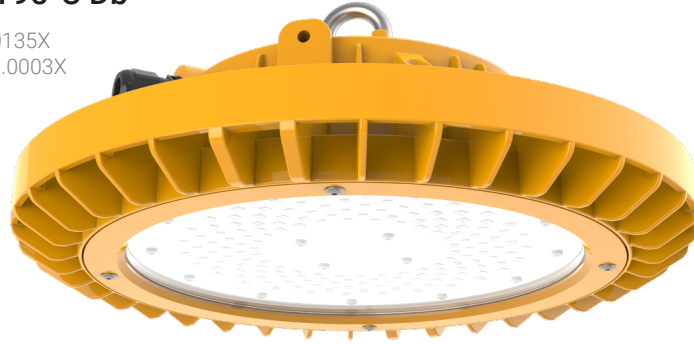
Zone 1, 21
Zone 2, 22

High bay lighting specific for explosive environments

II 2G Ex db eb ib mb op is IIC T5 Gb

II 2D Ex tb op is IIIC T95°C Db

ATEX certificate No: OBAC 21 ATEX0135X
IECEX certificate No: IECEX OBAC 21.0003X



5 YEARS warranty



Benefits

- High bay ready for hazardous environments with up to **25,600 lm**.
- Extreme resistance to weather and tough industrial conditions thanks to its glass cover and **copper-free** aluminium housing.
- Wide temperature range, from **-32°C up to 60°C**.
- Suitable for **outdoor**
- Several accessories to improve the installation.

Characteristics

IP 66/67
IK 10
Frequency 0-50/60Hz
Rated voltage 198-277 VAC / 198-250 VDC
NON-SELV

Mechanical characteristics

Housing	Copper-free casing aluminium alloy with surface protected against impacts and corrosive environments Yellow RAL 1003 Grey RAL 7035 optional
Diffuser	Hardened glass
Cable entry	1 cable gland M20 + 1 stopping plug M20
Eyebolt	Stainless steel

Electrical characteristics

Connection	3 - pole screwless connector
Power factor	> 0.95 full load
THD	< 20% full load
Inrush current	75A full load
Class protection	Class I
Rated voltage	198-277VAC / 198-250VDC

Functional characteristics

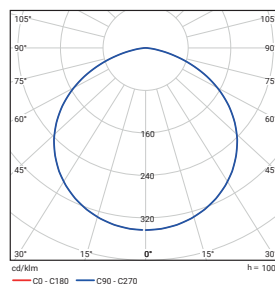
Lifetime	L80 90.000 at 25°C
----------	--------------------

Compliance

RoHS REACH

Photometrical characteristics

SDCM	< 3
------	-----



OREx1 G2 | flameproof

Description

FAMILY	DIAMETER (mm)	LUMINOUS FLUX (lm)	CRI	LIGHT COLOUR (K)	PROTECTION MODE Exd	EXTERNAL CONNECTION
> OREX 1 G2	> 38: Ø380	> 64: 6400 > 96: 9600 > 128: 12800 > 160: 16000 > 192: 19200 > 224: 22400 > 240: 24000 > 256: 25600	> 8: >80	> 40: 4000K	> SPD: with safety protection device	> CG: polyamide cable gland M20

Special options under request

Ask our Sales Team for more details

> 30: 3000K
> 50: 5000K
> 65: 6500K

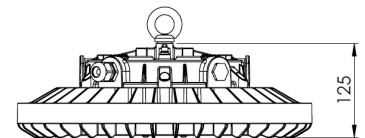
> NiCG: nickel-plated brass cable gland
> BCG: brass cable gland
> ACG: cable gland for armored cable
> H: housing with a hole for cable gland

Operational data

Description	Order number	Luminous flux (lm)	Power (W)	Efficiency (lm/W)	Colour temperature (K)	CRI	Temperature range
OREx1 G2 38 64-840 SPD CG	10348742	6400	40	160	4000	80	-32°C - +60°C
OREx1 G2 38 96-840 SPD CG	10348743	9600	60	160	4000	80	-32°C - +60°C
OREx1 G2 38 128-840 SPD CG	10348744	12800	80	160	4000	80	-32°C - +60°C
OREx1 G2 38 160-840 SPD CG	10348745	16000	100	160	4000	80	-32°C - +55°C
OREx1 G2 38 192-840 SPD CG	10348746	19200	120	160	4000	80	-32°C - +55°C
OREx1 G2 38 224-840 SPD CG	10348747	22400	140	160	4000	80	-32°C - +50°C
OREx1 G2 38 240-840 SPD CG	10348748	24000	150	160	4000	80	-32°C - +50°C
OREx1 G2 38 256-840 SPD CG	10348749	25600	160	160	4000	80	-32°C - +50°C

Dimensions and logistics

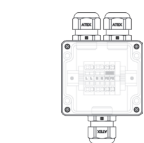
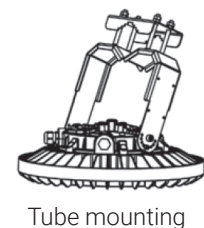
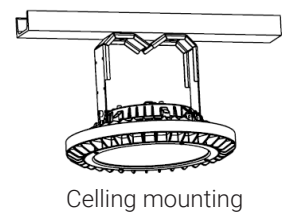
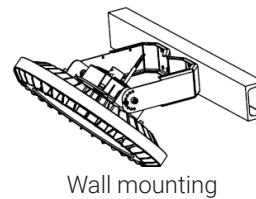
Description	Ø	Y						
	mm	mm	L x W x H mm	Item	Pcs/Box	Box	Groupage Pcs/Euro pallet	FTL / container Pcs/Double pallet
OREx1 G2...	380	125	390 x 390 x 200	6.5	1	7.5	48	48



Please check with our Back Office to confirm logistic data

Accessories¹

10348752	Bracket for tube mounting for OREx G2
10348753	Bracket for surface mounting for OREx G2
10230425	ATEX junction box 80x75x75mm
10225340	ATEX junction box 122x120x90mm
10376674	Nickel brass Ex cable gland, M25, with nut and ring, 1 unit
10376675	Nickel brass Ex cable gland, M20, with nut and ring, 1 unit



10225340 / 10230425



10376674 / 10376675

¹ Available accessories can vary depending on the luminaire version. To check compatibility, please contact our Sales Team.

