



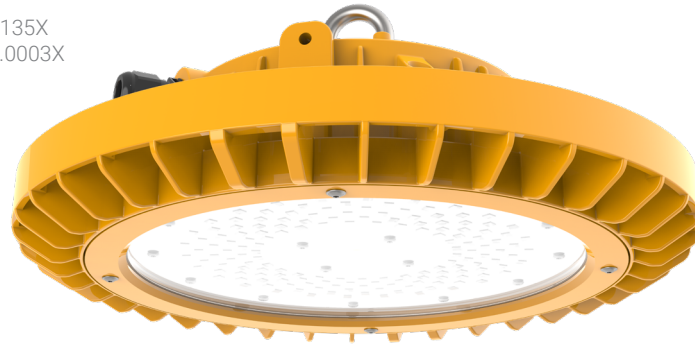
# OREx1 G2 | increased safety

Zone 1, 21  
Zone 2, 22

High bay lighting specific for explosive environments

**II 2G Ex eb ib mb op is IIC T5...T4 Gb**  
**II 2D Ex tb op is IIIC T95°C...T121°C Db**

ATEX certificate No: OBAC 21 ATEX0135X  
IECEX certificate No: IECEx OBAC 21.0003X



5 YEARS warranty



## Benefits

- High bay ready for hazardous environments with up to **25,600 lm**.
- Extreme resistance to weather and tough industrial conditions thanks to its glass cover and **copper-free** aluminium housing.
- Wide temperature range, from **-32°C up to 75°C**.
- Suitable for **outdoor**
- Several accessories to improve the installation.

## Characteristics

IP 66/67   IK 10   Frequency 0-50/60Hz   Rated voltage 198-277 VAC / 198-250 VDC   NON-SELV

### Mechanical characteristics

Housing	Copper-free casing aluminium alloy with surface protected against impacts and corrosive environments Yellow RAL 1003 Grey RAL 7035 optional
Diffuser	Hardened glass
Cable entry	1 cable gland M20 + 1 stopping plug M20
Eyebolt	Stainless steel

### Electrical characteristics

Connection	3- pole screwless connector
Power factor	> 0.95 full load
THD	< 20% full load
Inrush current	75A full load
Class protection	Class I
Rated voltage	198-277VAC / 198-250VDC

### Functional characteristics

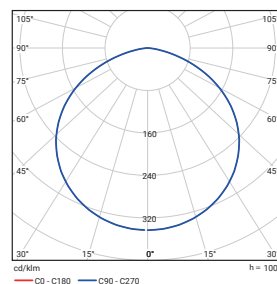
Lifetime	L80 90.000 at 25°C
----------	--------------------

Compliance: CE, Ex, IECEx

RoHS REACH

### Photometrical characteristics

SDCM	< 3
------	-----



## OREx1 G2 | increased safety

### Description

FAMILY	DIAMETER (mm)	LUMINOUS FLUX (lm)	CRI	LIGHT COLOUR (K)	EXTERNAL CONNECTION	TEMPERATURE RANGE
> OREX 1 G2	> 38: Ø380	> 64: 6400 > 96: 9600 > 128: 12800 > 160: 16000 > 192: 19200 > 224: 22400 > 240: 24000 > 256: 25600	> 8: >80	> 40: 4000K	> CG: polyamide cable gland > NiCG: nickel-plated cable gland	> HT: high temperature version up to 75°C with an additional heat sink

Special options under request

Ask our Sales Team for more details

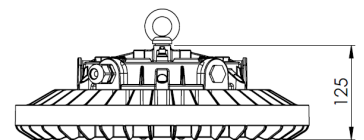
- > 30: 3000K
- > 50: 5000K
- > 65: 6500K
- > BCG: brass cable gland
- > ACG: cable gland for armored cable
- > H: housing with a hole for cable gland

### Operational data

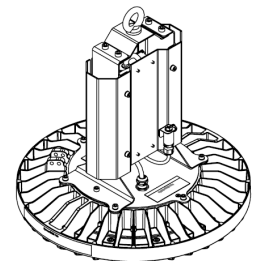
Description	Order number	Luminous flux (lm)	Power (W)	Efficiency (lm/W)	Colour temperature (K)	CRI	Temperature range
OREx1 G2 38 64-840 CG	10348734	6400	40	160	4000	80	-32°C - +60°C
OREx1 G2 38 96-840 CG	10348735	9600	60	160	4000	80	-32°C - +60°C
OREx1 G2 38 128-840 CG	10348736	12800	80	160	4000	80	-32°C - +60°C
OREx1 G2 38 160-840 CG	10348737	16000	100	160	4000	80	-32°C - +55°C
OREx1 G2 38 192-840 CG	10348738	19200	120	160	4000	80	-32°C - +55°C
OREx1 G2 38 224-840 CG	10348739	22400	140	160	4000	80	-32°C - +50°C
OREx1 G2 38 240-840 CG	10348740	24000	150	160	4000	80	-32°C - +50°C
OREx1 G2 38 256-840 CG	10348741	25600	160	160	4000	80	-32°C - +50°C
<b>HIGH TEMPERATURE (HT)</b>							
OREx1 G2 38 64-840 NiCG HT	10348754	6400	40	160	4000	80	-32°C - +75°C
OREx1 G2 38 96-840 NiCG HT	10348755	9600	60	160	4000	80	-32°C - +70°C
OREx1 G2 38 128-840 NiCG HT	10348756	12800	80	160	4000	80	-32°C - +65°C

### Dimensions and logistics

Description	Ø	Y						
	mm	mm	L x W x H mm	Item	Pcs/Box	Box	Groupage Pcs/Euro pallet	FTL / container Pcs/Double pallet
OREx1 G2...	380	125	390 x 390 x 200	6.3	1	7.3	48	48
OREx1 G2...HT	380	125	390 x 390 x 200	6.4	1	7.4	48	48



OREx1 G2

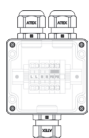


OREx1 G2...HT

Please check with our Back Office to confirm logistic data

### Accessories<sup>1</sup>

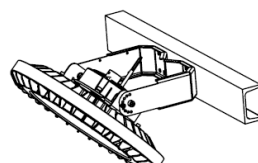
10348752	Bracket for tube mounting for OREx G2
10348753	Bracket for surface mounting for OREx G2
10230425	ATEX junction box 80x75x75mm
10225340	ATEX junction box 122x120x90mm
10376674	Nickel brass Ex cable gland, M25, with nut and ring, 1 unit
10376675	Nickel brass Ex cable gland, M20, with nut and ring, 1 unit



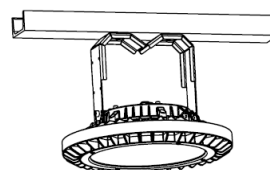
10225340 / 10230425



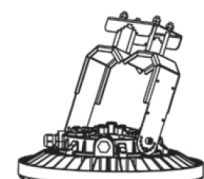
10376674 / 10376675



Wall mounting



Celling mounting



Tube mounting

<sup>1</sup> Available accessories can vary depending on the luminaire version. To check compatibility, please contact our Sales Team.

