



Reliable explosion proof lighting





Zone 1



Ⓜ II 2G Ex eb mb IIC T4 Gb
 Ⓜ II 2D Ex tb IIIC 85°C Db
 ATEX certificate No: INERIS 22ATEX0035X
 IECEx certificate No: IECEx INE 22.0059X

STRONGEx1 G2

Zone 1, 21



Extreme robustness, suitable for outdoor

- Openable, to facilitate installation.
- High chemical and impacts resistant PMMA profile.

Up to 5,600lm
Up to 165lm/W
L80 100,000 h

IP66/69K
IK10



Ⓜ II 2G Ex db IIC T6 Gb
 Ⓜ II 2D Ex tb IIIC T85°C Db
 ATEX certificate No: INERIS 20ATEX0006X
 IECEx certificate No: IECEx INE 20.0005X

KRATEx

Zone 1, 21



Connected lighting with a wide range of options

- Made in UV resistant polycarbonate IK10, or borosilicate glass, with aluminium alloy end caps.
- Flame proof, with protection mode Ex db.
- Through wiring, emergency kit, DALI and Bluetooth dimming available.

Up to 11,750lm
Up to 150lm/W
L80 50,000 h

Glass: IK07/IK09
Pc: IK10



NEW



Ⓜ II 2G Ex eb ib mb IIC T6/T5 Gb
 Ⓜ II 2D Ex tb IIIC T85°C Db
 ATEX certificate No: OBAC 23 ATEX 0035X

ACQUEx 1 TA

Zone 1, 21

Zone 2, 22



Traditional aesthetics luminaire for Ex zone 1

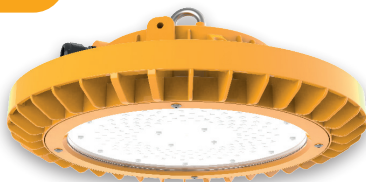
- Compressed fibreglass reinforced polyester housing.
- Impact resistant polycarbonate diffuser, and stainless steel closing clips.
- With PA Ex cable gland to make installation easier.

Up to 7,800lm
Up to 139lm/W
L80 70,000 h

IP66
IK10



NEW



ATEX certificate No: OBAC 21 ATEX 0135X
 IECEx certificate No: IECEx OBAC 21.0003X

Increased safety

Ⓜ II 2G Ex eb ib mb op is IIC T5 Gb
 Ⓜ II 2D Ex tb op is IIIC T95°C Db

OREx1 G2

Zone 1, 21

Zone 2, 22



High bay lighting specific for explosive environments

- With extreme resistance thanks to its copper-free aluminium housing and its glass cover, suitable for outdoor.
- Flameproof version with safety protection device.

Up to 25,600lm
160lm/W
L80 90,000 h

IP66 / IP67
IK10



Increased safety / high temperature

Ⓜ II 2G Ex eb ib mb op is IIC T4 Gb
 Ⓜ II 2D Ex tb op is IIIC T121°C Db

Flameproof

Ⓜ II 2G Ex db eb ib mb op is IIC T5 Gb
 Ⓜ II 2D Ex tb op is IIIC T95°C Db



Zone 2



Ⓜ II 3G Ex ec IIC T6..T4 Gc
 Ⓜ II 3D Ex tc IIIC T85°C Dc
 ATEX certificate No: INERIS 22ATEX3012X
 IECEx certificate No: IECEx INE 22.0060X

STRONGEx2 G2

Zone 2, 22



Robust luminaire with increased safety protection, suitable for outdoor

- Different lengths with high efficiency.
- DALI dimmable versions, wireless control and optional emergency kit.

Up to 8,500lm
Up to 182lm/W
L80 100,000 h

IP66/69K
IK10



+55°C
-36°C



Ⓜ II 3G Ex ec IIC T6 Gc
 Ⓜ II 3D Ex tc IIIC T85°C Dc
 ATEX certificate No: OBAC 19 ATEX 0206X
 IECEx certificate No: IECEx OBAC 23.0005X

ACQUEx

Zone 2, 22

Extremely simply, safe and reliable

- Compressed fibreglass reinforced polyester housing.
- Impact resistant polycarbonate diffuser, and stainless steel closing clips.
- With optional emergency kit.

ACQUEx LED-M, with LED module



Up to 8,000lm
Up to 153lm/W
L80 100,000 h

IP66
IK10

+50°C
-20°C

ACQUEx LED T8, with LED tube



Ⓜ II 3G Ex ec IIC T6 Gc
 Ⓜ II 3D Ex tc IIIC T85°C Dc

Up to 6,000lm
Up to 122lm/W
L80 50,000 h

IP66
IK10

+40°C
-20°C

NEW



Ⓜ II 3G Ex ec op is IIC T5..T4 Gc
 Ⓜ II 3D Ex tc op is IIIC T80°C..T115°C Dc
 ATEX certificate No: OBAC 21 ATEX 0135X
 IECEx certificate No: IECEx OBAC 21.0003X

OREx2 G2

Zone 2, 22



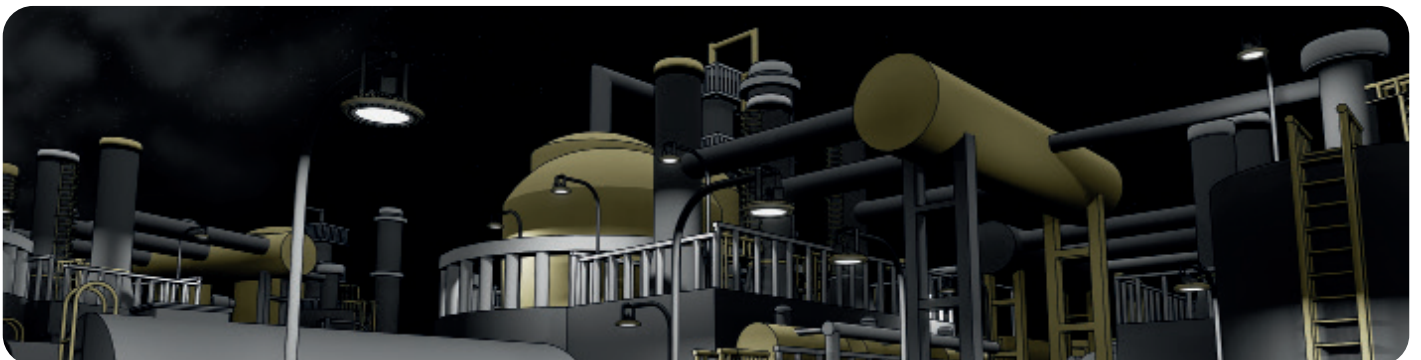
Copper-free high bay explosion proof luminaire

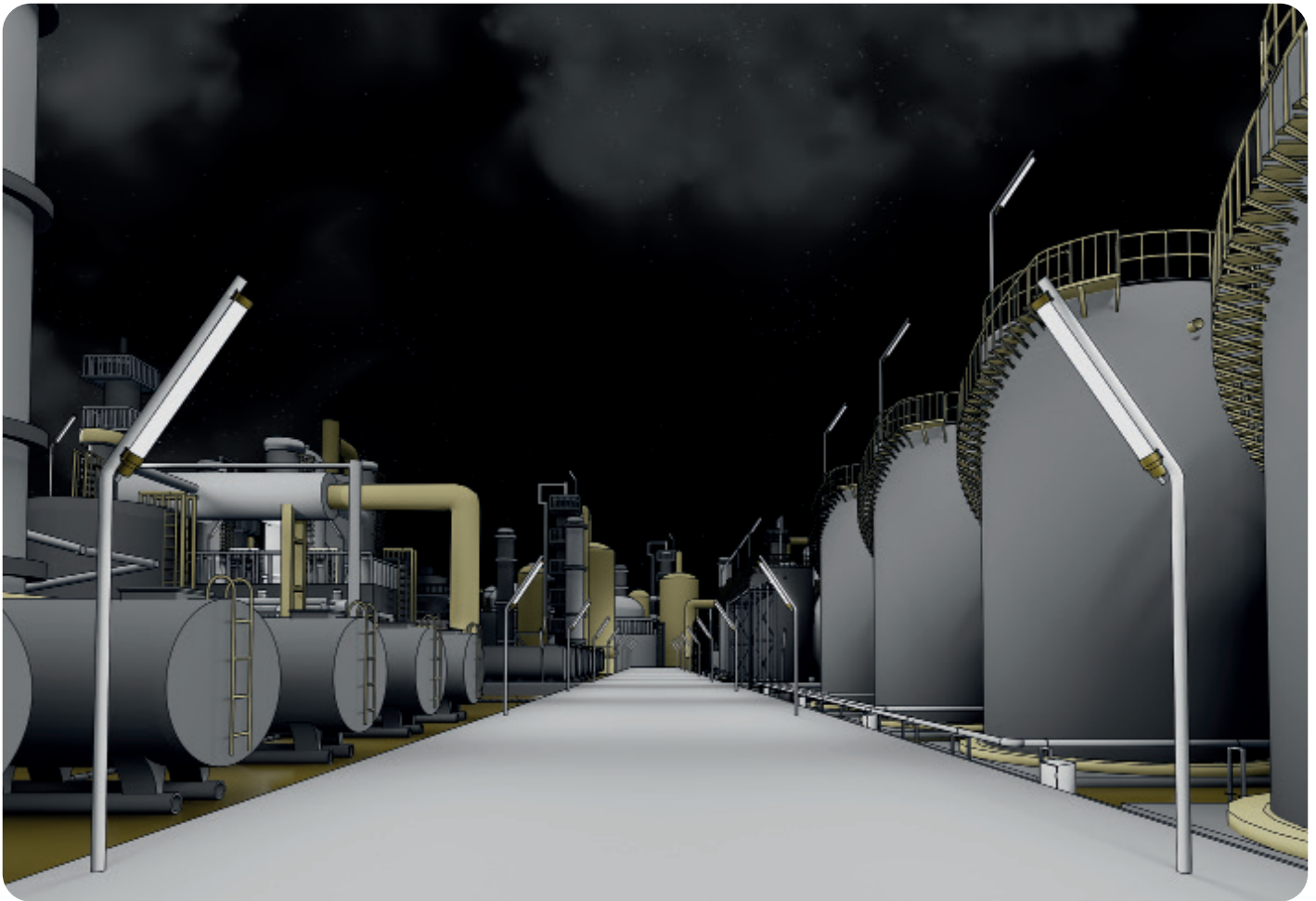
- Wide input voltage range for different regions and industries.
- With mounting and connection accessories to make installation easier.

Up to 41,850lm
155lm/W
L80 90,000 h

IP66 / IP67
IK10

+75°C
-32°C





Why ZALUX is your reliable partner for safe luminaires suitable for Ex-zones?

40 years experience

Specialized in the development and **manufacturing in Europe** of luminaires with high protection ratings. Our solutions have been installed in chemical, oil & gas or heavy industries in **more than 70 countries**.

Certified quality

Zalux luminaires comply with **ATEX – IECEx standards**, as well as CE and ROHS marks. Their quality is the result of **reliable processes and consistent testing**.

Registered partner

We are a registered vendor in major **EPC companies** and oil and gas end users globally. Our processes and products comply with the **strict requirements** of the most demanding industries.

Specialised team

Our **experienced team** cares for the continuous improvement of our luminaires and is **at your disposal** to help you find the appropriate lighting solution for each project.

What can you expect from our explosion proof LED luminaires?

Safety

Compliance with **electrical, temperature or resistance tests**, some of which are carried out in our laboratories, together with **fully sealed products up to IP69K**, guarantee that Ex-certified luminaires are suitable for hazardous areas where strict requirements must be met.

Reliability

We choose high quality materials for each application, from impact resistant PMMA, borosilicate glass or 316L stainless steel, among others, to offer **maximum robustness**.

EX luminaires are used during long times in challenging locations, so they offer a **great resistance** to acids, sulphur or salty environments.

Durability

Optimal thermal management allows a **long lifetime** up to 100,000 hours. Together with the low failure rate of electrical components and the **high energy efficiency**, it implies **nearly zero maintenance** while keeping lighting quality, which represents **huge savings**.

5 YEARS
warranty

www.zalux.com

