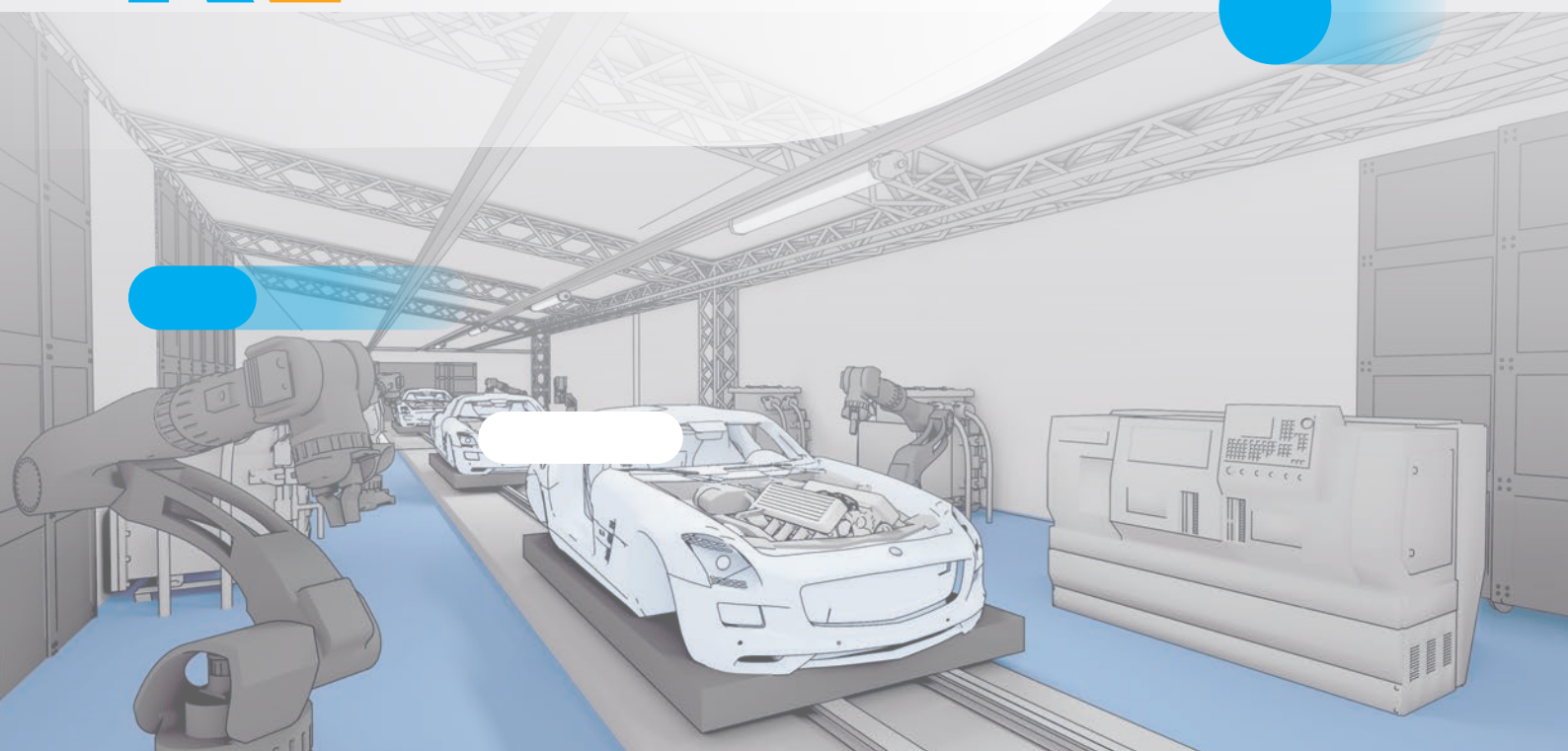
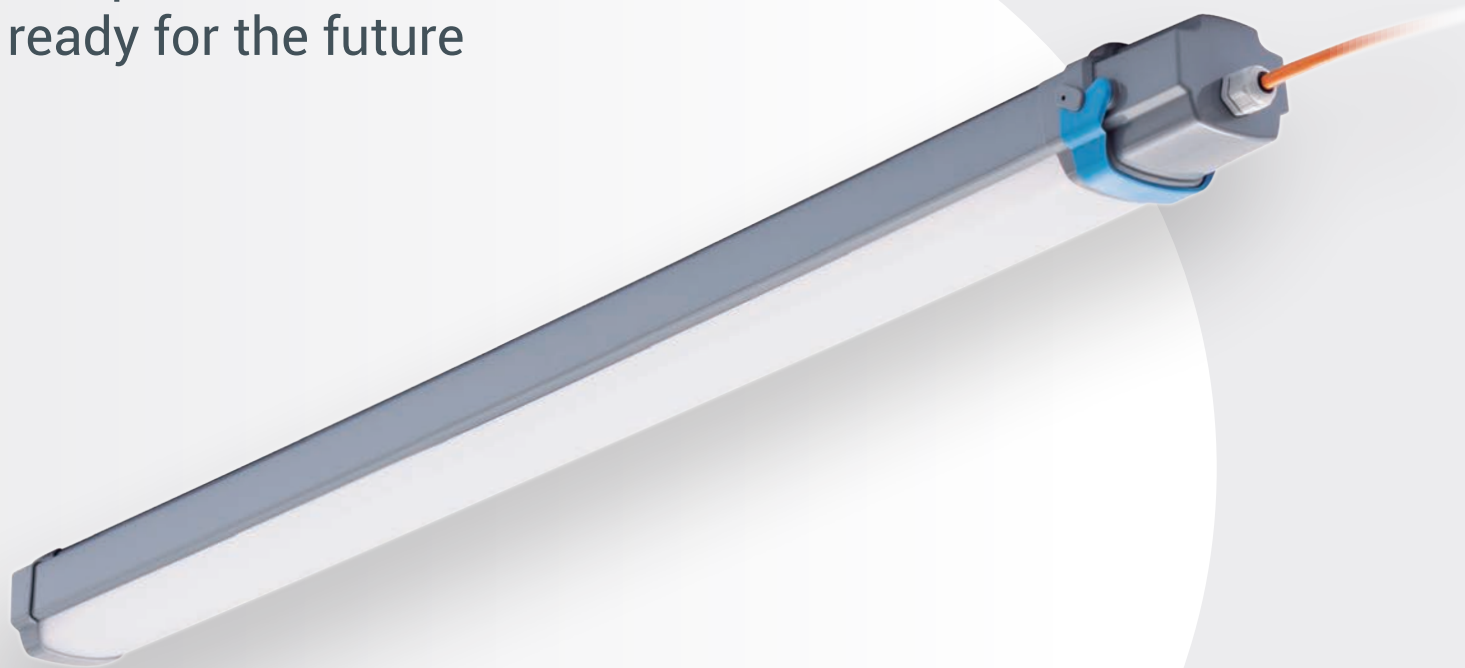




The protected luminaire  
ready for the future





5 YEARS warranty



### Characteristics

#### Mechanical IK10 IP66 / IP69(80°)

Profile	Opal extruded polycarbonate with UV protection Upper part dark grey RAL 7046
End caps	Injected polycarbonate
Lever	Injected polyamide Blue RAL 5012
Gasket	Removable and recyclable thermoplastic elastomers
Cable entry	Cable gland (M20 or M25)
Fixing clips	Stainless steel 301 or 316L

#### Electrical

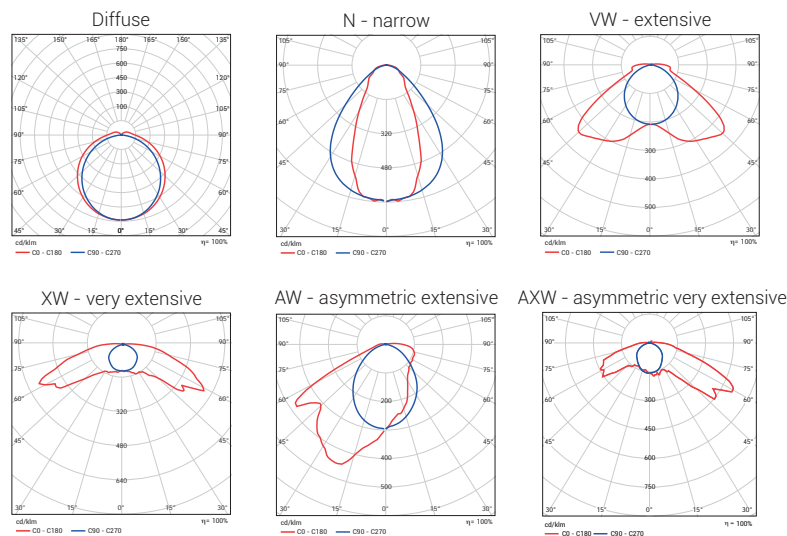
Connection	3 to 8 poles WAGO quick connector
Flicker factor	<1%

#### Functional

Lifetime	Up to L80 100,000 hours at 35°C
----------	---------------------------------

#### Photometrical

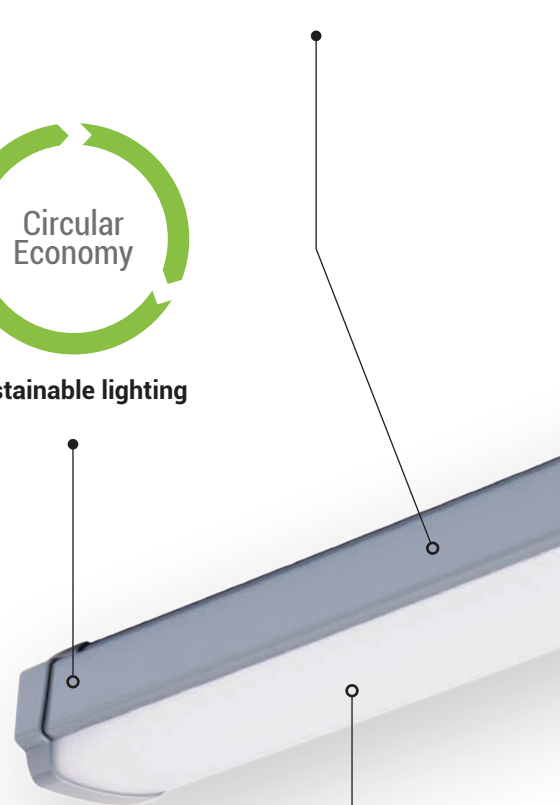
Luminous flux	Up to 15,000lm
Efficiency	Up to 165lm/W



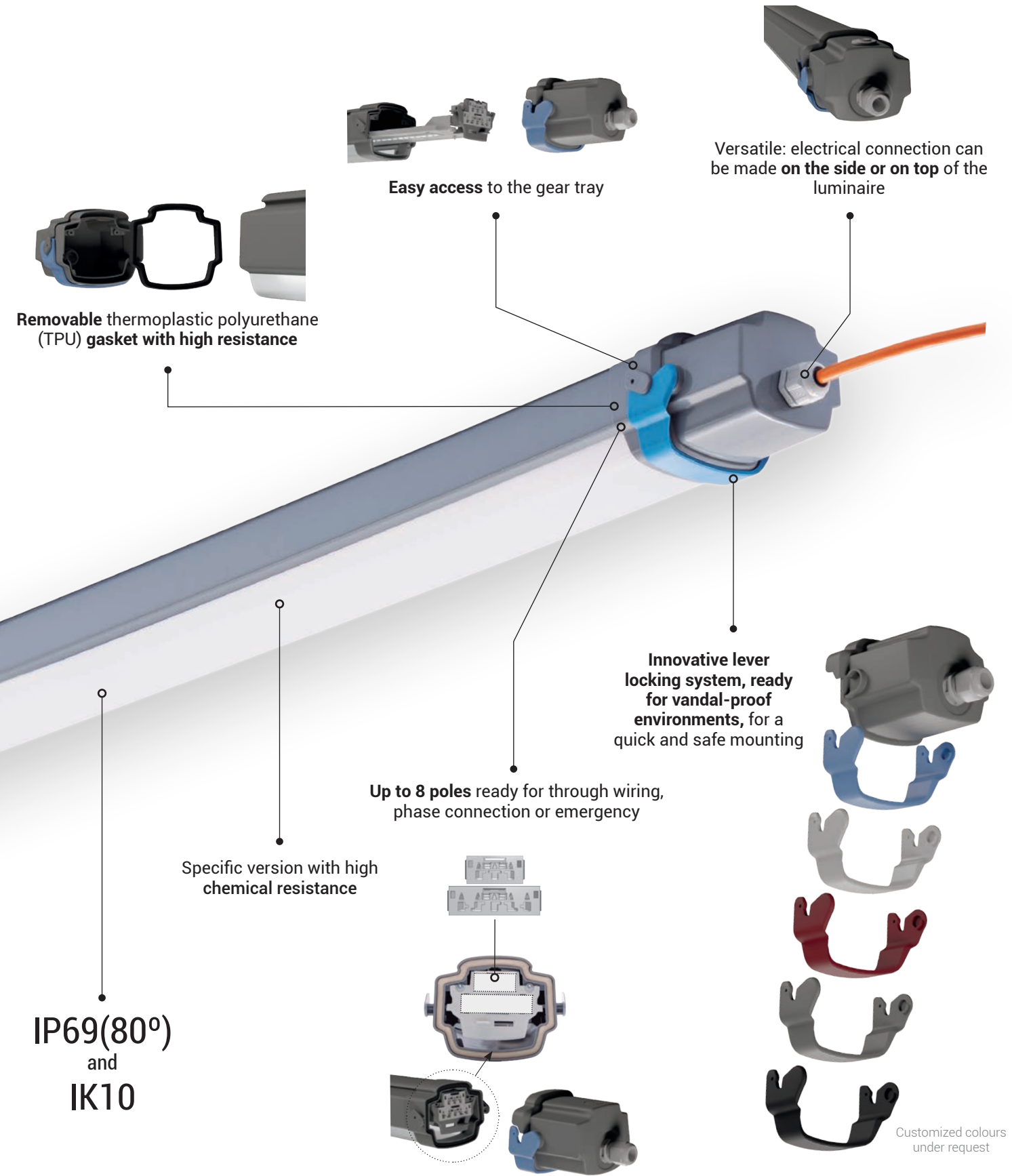
Robust for a wide range of temperatures



Sustainable lighting



Made to last with up to 100,000 hours



Easy access to the gear tray

Versatile: electrical connection can be made on the side or on top of the luminaire

Removable thermoplastic polyurethane (TPU) gasket with high resistance

Innovative lever locking system, ready for vandal-proof environments, for a quick and safe mounting

Up to 8 poles ready for through wiring, phase connection or emergency

Specific version with high chemical resistance

IP69(80°) and IK10

Customized colours under request



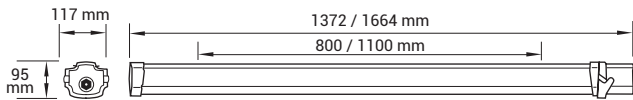


## Options Special options in grey under request

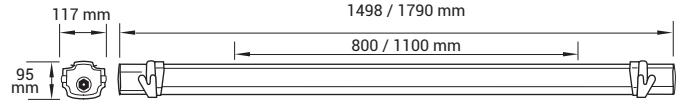
LENGTH (mm)	OPTICS	LUMINOUS FLUX (lm)	CRI	LIGHT COLOUR (K)	DRIVER	PROFILE AND END CAPS	THROUGH WIRING	SENSOR	EMERGENCY KIT	HIGH TEMPERATURE
1.2: 1200	-: diffuse	40: 4000	8: >80	40: 4000	ET: non-dimmable	PC: polycarbonate	3x1.5mm <sup>2</sup>	HFS: high frequency sensor	EB3: 3 hours	HT: up to 55°C
1.5: 1500	N: narrow	60: 6000	9: >90	30: 3000	ETDD: DALI dimmable	PCC: resistant polycarbonate	5x2.5mm <sup>2</sup>		EB1: 1 hour	
0.6: 600	VW: extensive XW: very extensive AW: asymmetric extensive AXW: asymmetric very extensive	80: 8000 100: 10000 ML: from 2000 to 10000 150: 15000		50: 5000 65: 6500	ETDD CS: Casambi dimmable ETD: 1-10V dimmable CLO: Constant Lumen Output HCL: Human Centric Lighting		3x1.5mm <sup>2</sup> to 8x2.5mm <sup>2</sup>		EB3 NDA: 3 hours DALI	

More options available:   
 - Fast connector   
 - Protection Class II

### STANDARD VERSION

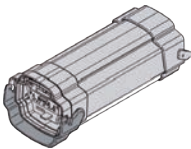


### THROUGH WIRING VERSION



## Modularity<sup>1</sup>

Connect **up to 15 lighting units in one line**, thanks to its through wiring ready for dimmable versions and the easy and quick locking system between profiles.



With additional modules to improve project's energy efficiency:

- **Wireless solution**, to control the lighting installation remotely and without the need of rewiring.
- **Presence and daylight sensor**, to use the light only where and when it is really needed.

<sup>1</sup> See the latest datasheet on our website for more details on the continuous line connection

## Accessories

Description	Order number
Suspension wire 2m hook and fastener, 1 unit <sup>1</sup> <sup>1</sup> 2 units required per luminaire	10103049
Theft protection (required for wall mounting), set for 1 luminaire	10149442

Description	Order number
ZBWM wall mounting accessory (allows luminaire rotation), 2 pieces set	10207593
Fixing clips in stainless steel 316L, 2 units	10256809

