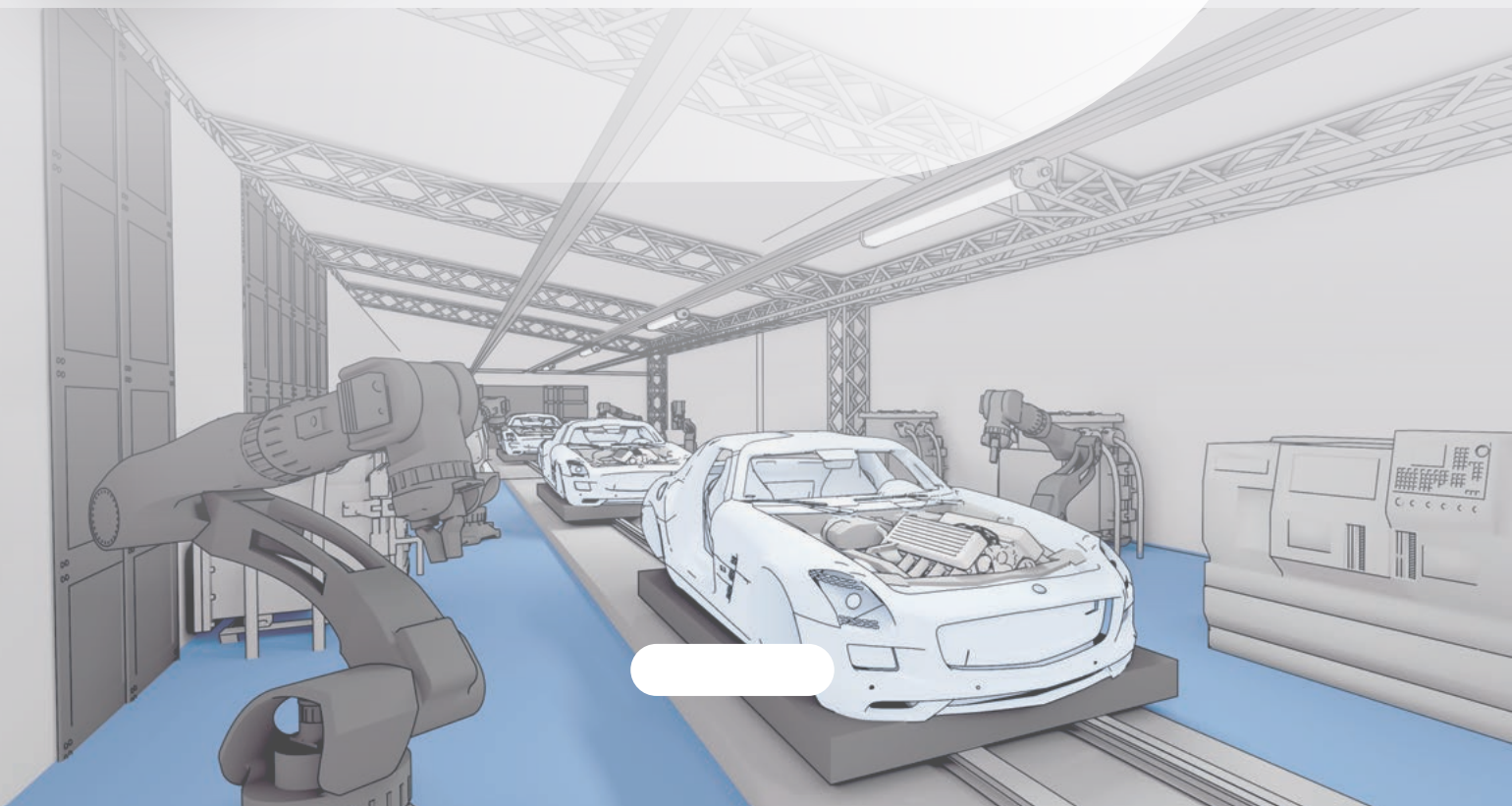
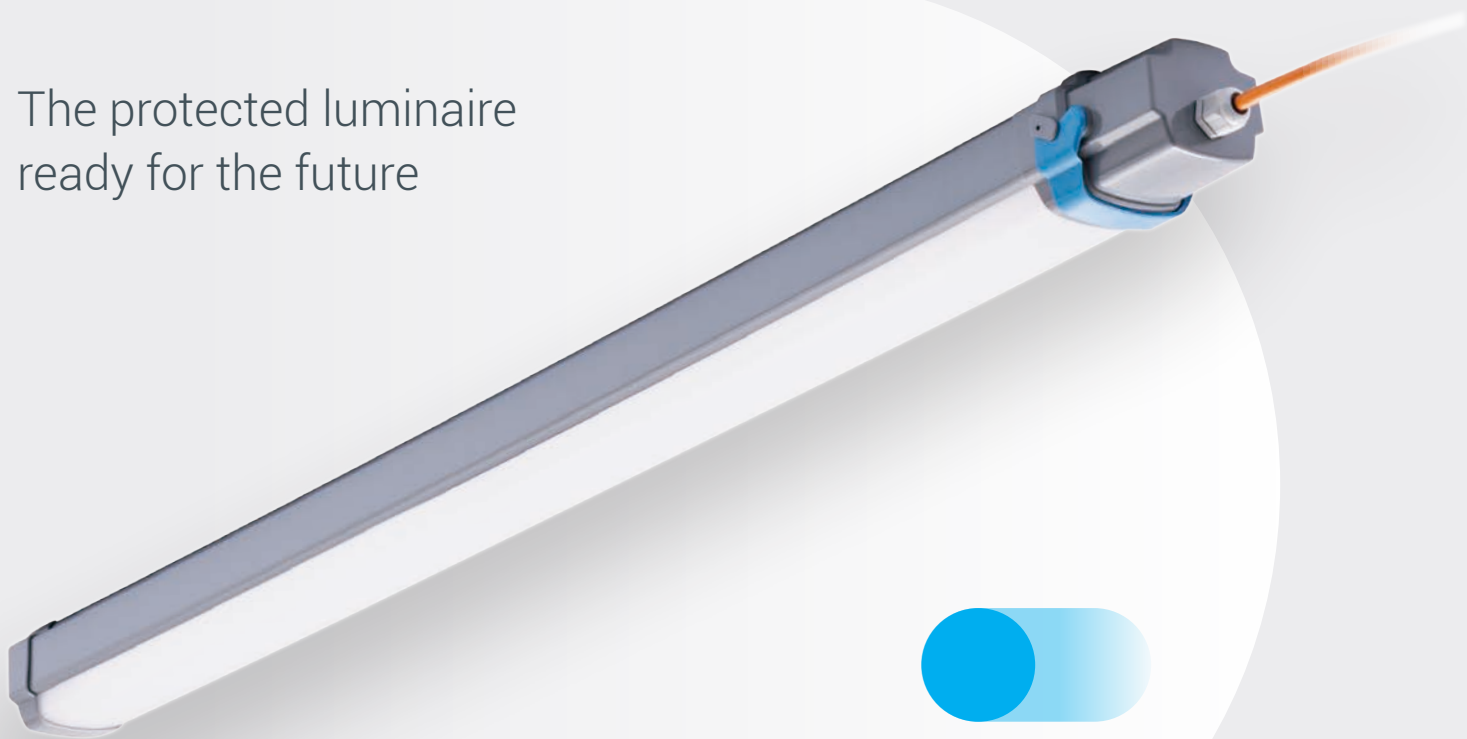




The protected luminaire
ready for the future





5 YEARS warranty



Characteristics

Mechanical IK10 IP66 / IP69(80°C)

Profile	Extruded polycarbonate with UV protection Upper part dark grey RAL 7046
End caps	Injected polycarbonate
Lever	Injected polyamide Blue RAL 5012
Gasket	Removable and recyclable thermoplastic elastomers
Cable entry	Cable gland (M20 or M25)
Fixing clips	Stainless steel 301 or 316L

Electrical

	Frequency 0-50/60Hz	Rated Voltage 220-240V	NON-SELV
--	------------------------	---------------------------	----------

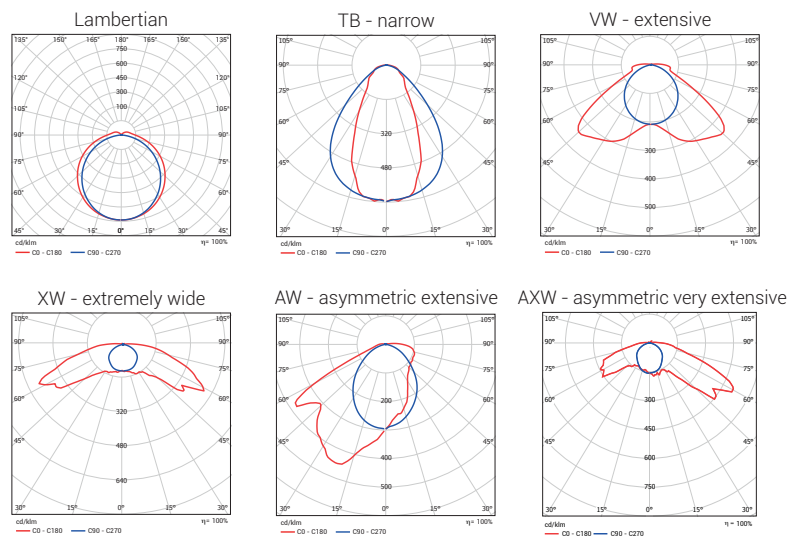
Connection	3 to 8 poles WAGO quick connector
Flicker factor	<1%

Functional

Lifetime	Up to L80 100,000 hours at 35°C
----------	---------------------------------

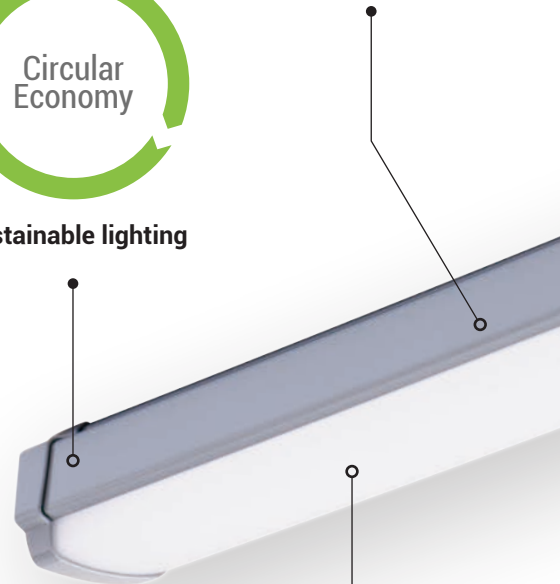
Photometrical

Luminous flux	Up to 10,000lm
Efficiency	Up to 157lm/W

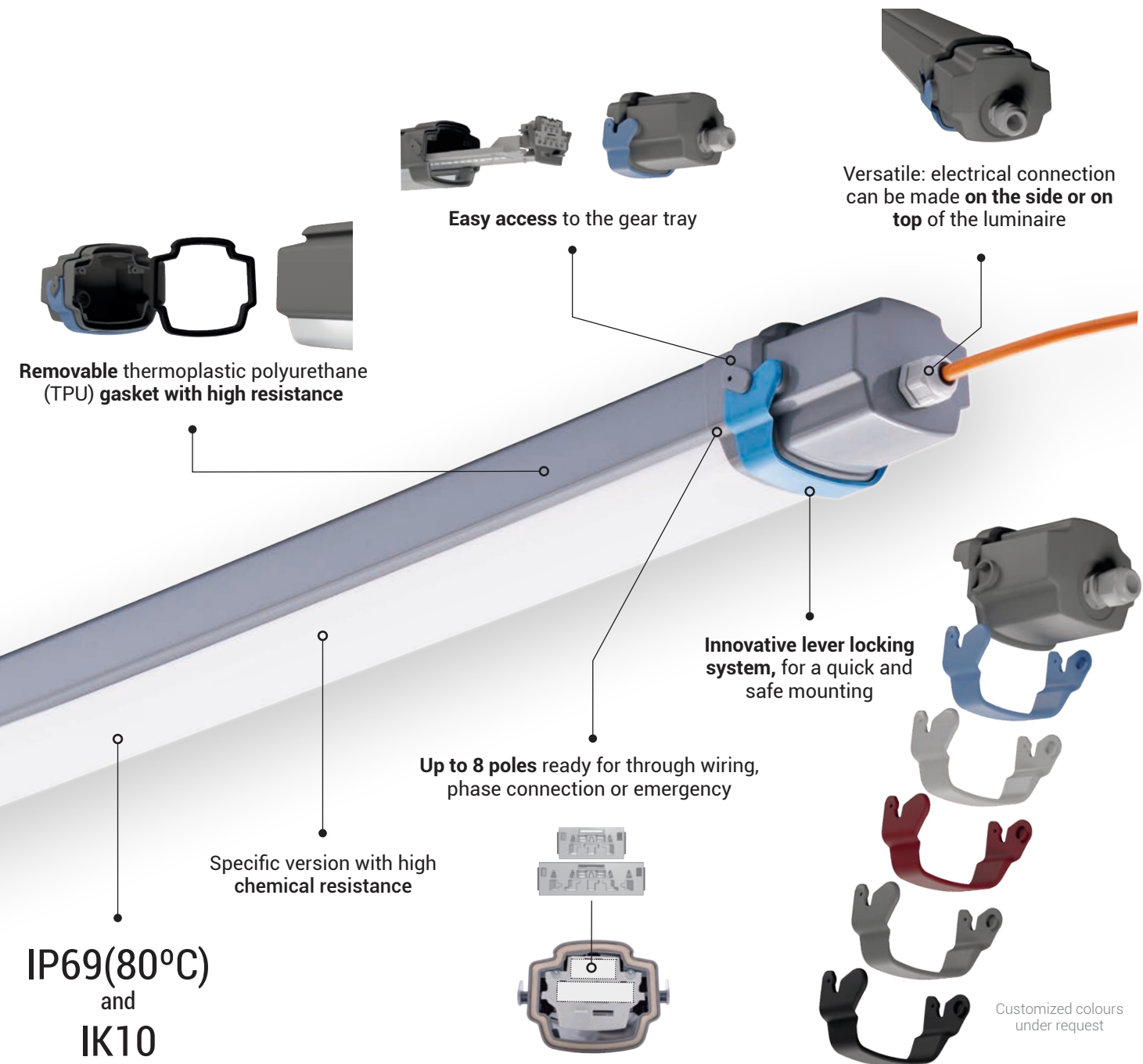


Sustainable lighting

Robust for a wide range of temperatures



Made to last with up to 100,000 hours



KE Outdoor

- PMMA profile with UV protection, resistant to ageing and solar radiation.
- With theft protection accessory for a safer surface mounting outdoor.
- High impact protection and reliable locking system to close the luminaire.

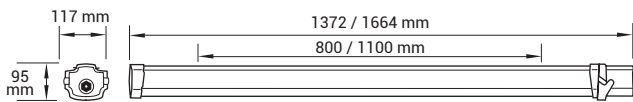


Options Special options in grey under request

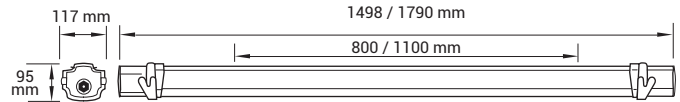
LENGTH (mm)	OPTICS	LUMINOUS FLUX (lm)	CRI	LIGHT COLOUR (K)	DRIVER	PROFILE AND END CAPS	THROUGH WIRING	SENSOR	EMERGENCY KIT	HIGH TEMPERATURE
1.2: 1200	-: lambertian	40: 4000	8: >80	40: 4000	ET: non-dimmable	PC: polycarbonate	3x1.5mm ²	HFS: high frequency sensor	EB3: 3 hours	HT: up to 55°C
1.5: 1500	TB: narrow	60: 6000	9: >90	30: 3000	ETDD: DALI dimmable	PCC: resistant polycarbonate	5x2.5mm ²		EB1: 1 hour	
0.6: 600	VW: extensive XW: extremely wide AW: asymmetric extensive AXW: asymmetric very extensive	80: 8000 100: 10000		50: 5000 65: 6500	ETDD CS: Casambi dimmable ETD: 1-10V dimmable CLO: Constant Lumen Output HCL: Human Centric Lighting	PM: PMMA	3x1.5mm ² to 8x2.5mm ²		EB3 NDA: 3 hours DALI	

More options available:
 - Fast connector
 - Protection Class II

STANDARD

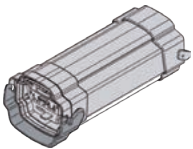


THROUGH WIRING



Modularity¹

Connect **up to 15 lighting units in one line**, thanks to its through wiring ready for dimmable versions and the easy and quick locking system between profiles.



With additional modules to improve project's energy efficiency:

- **Wireless solution**, to control the lighting installation remotely and without the need of rewiring.
- **Presence and daylight sensor**, to use the light only where and when it is really needed.

¹ See the latest datasheet on our website for more details on the continuous line connection

Accessories

Description	Order number
Suspension wire 2m hook and fastener, 1 unit ¹ ¹ 2 units required per luminaire	10103049
Theft protection (required for wall mounting), set for 1 luminaire	10149442

Description	Order number
ZBWM wall mounting accessory (allows luminaire rotation), 2 pieces set	10207593
Fixing clips in stainless steel 316L, 2 units	10256809

